



Labbé

ARTZ

Gallery



REGALA
CONSENTIDO

DESDE 2005 ENTREGANDO UN ESPACIO PARA EL ARTE



VISION

BEING MEDIATORS OF THE WORLD DELARTE FOR ITS UNIVERSAL DIFFUSION

MISIÓN

1. Generate meeting instances that encourage the exchange of views, perspectives and paradigms among the different actors of the the world of art, especially with regard to the problems that as a society in this area, with the purpose of realizing innovative and comprehensive projects that contribute to its solution.
2. To promote, through the implementation of cultural projects, the SOC Participation

PROMOTE:

The formation of solid and effective networks in the transmission of culture. The incorporation of new, non-traditional actors into the art circuit, in order to position it as an issue within the international agenda. Projects designed with continuity, and in partnership with other organizations, so that those who participate in them find a real benefit to their life



DR. NÉSTOR J. SOTO GODOY
SOCIO Y FUNDADOR



MARÍA-JOSÉ FUENTES LABBÉ
SOCIA Y FUNDADORA



DANIELLA GUERRERO CARIOLA
DIRECTORA EJECUTIVA
SEDE SANTIAGO, CHILE
Y CORAL GABLES, USA



NATE GROTEHUIS
DIRECTOR EJECUTIVO
SEDE SANTA BÁRBARA, USA



PAULINA MÁRQUEZ SANHUEZA
ENCARGADA DE
FONDOS Y FINANZAS



ANETTE AXTELL JAQUE
COORDINADORA DE TALLERES
Y MARKETING DIGITAL

ArtLabbe

GALLERY

www.artlabbe.cl

Born in Santiago, Chile in 2005

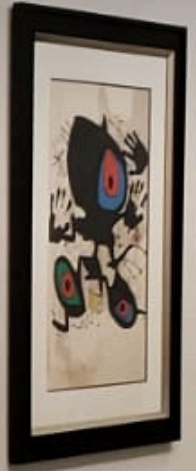
in the Alonso de Córdova neighborhood, Vitacura and is based in Miami, United States located at 2522 Ponce de Leon Blvd,

Coral Gables, Florida.

SINCE 2005 PROVIDING A SPACE FOR ART

www.artlabbe.cl

DESDE 2005 ENTREGANDO UN ESPACIO PARA EL ARTE



EXHIBITIONS IN THE USA

In the photo, group exhibition at Coral Gables.

SINCE 2005 PROVIDING A SPACE FOR ART

Ambar

Labbé
ART
Gallery



EXHIBITIONS IN CHILE

In the photo exhibition, artist Pablo Krassa,

SINCE 2005 PROVIDING A SPACE FOR ART



— www.fundacionartlabbe.cl —

In 2016, ArtLabbe Gallery created the ArtLabbe Foundation. This non-profit organization develops inclusive projects in the the field of art and national culture, granting free benefits to people of all ages with cognitive disabilities, children of vulnerable schools and children with kidney disease.

SINCE 2005 PROVIDING A SPACE FOR ART

The background of the image shows a collection of various brushes and paint tubes in a container. The brushes have different bristles, some natural and some synthetic, and are wrapped in clear plastic. The paint tubes are also wrapped in plastic and some have colorful labels. In the top right corner, there is a circular logo with the text "FUNDACIÓN ARTLABBE-MEDIADORES DEL MUNDO DEL ARTE" around the perimeter and the letters "FAU" in the center. The text "PROJECTS RUNNING" is overlaid in white, bold, uppercase letters in the upper middle part of the image.

PROJECTS RUNNING

- 1. WORKSHOP PROGRAM
ART WITH A THERAPEUTIC
APPROACH**
- 2. COMPETITION
OF ARTS AND POEMS
FOR PEOPLE IN A SITUATION
COGNITIVE DISABILITY**
- 3. EDUCATIONAL MURALS**



LIST OF WORKSHOPS INCLUDING THE
ART PROGRAM WITH A THERAPEUTIC
APPROACH

PROYECT SINCE DECEMBER 2019

**INCLUSIVE WORKSHOP: ART WITH
THERAPEUTIC APPROACH
WORKSHOP: CRAFTS
INCLUSIVE WORKSHOP: MUSIC WITH A FOCUS
THERAPEUTIC
ART WORKSHOPS WITH A THERAPEUTIC APPROACH
INCLUSIVE WORKSHOP: BODY EXPRESSION
(CALISTHENICS AND PILATES)
PROJECT SINCE DECEMBER 2019
LIST OF WORKSHOPS INCLUDING THE
ART PROGRAM**



Barlovento Foundation

Art Workshop with a Therapeutic Approach for Young People with cognitive and/or motor disabilities. Benefit granted since 2023

ART WORKSHOPS WITH A THERAPEUTIC APPROACH



Sacred Heart Home
by Jesús de Paine

Art Workshop with a Therapeutic Approach for Men
Youth and adults with cognitive disabilities

Moderate and severe
ART WORKSHOPS WITH A THERAPEUTIC APPROACHO

Benefit granted since 2022



El Palqui School

Art workshop with a therapeutic approach for
children and
Adolescents in social vulnerability
Benefit granted since 2021

ART WORKSHOPS WITH A THERAPEUTIC APPROACH



**Renal Corporation
Children's Mater**

**Crafts Workshop for families of children with
kidney diseases that come from regions due to
some medical treatment with an adult caregiver.**

(mother, father or guardian).

Benefit granted since 2023

ART WORKSHOPS WITH A THERAPEUTIC APPROACH



Las Rosas Foundation

Music workshop with a therapeutic approach
for elderly women with cognitive impairment.
Benefit granted since 2022



Syndrome Corporation
by Williams Chile

Online music workshop with a therapeutic
approach
for young people with Williams syndrome.
Pilot Workshop April 2024

ART WORKSHOPS WITH A THERAPEUTIC APPROACH



YMCA Santiago

Online music workshop with a therapeutic approach
for young people with intellectual disabilities and older
adults.

Pilot Workshop May 2024

ART WORKSHOPS WITH A THERAPEUTIC APPROACH



ARTLABBE FOUNDATION

**Calisthenics Workshop, held at our
headquarters
and open to the community.
Pilot Workshop May 2024**

ART WORKSHOPS WITH A THERAPEUTIC APPROACH



ARTLABBÉ FOUNDATION

EMOCIONARTE Workshop, with the aim of delivering a
artistic experience for all ages and promote the
work of our foundation.

Workshop awarded since 2020

ART WORKSHOPS WITH A THERAPEUTIC APPROACH

IMPACT WORKSHOP 2023



150

Direct Beneficiaries



340

Indirect beneficiaries
(families)



7

Beneficiary Institutions
weekly



9

Workshops held
Weekly



2ND INTERNATIONAL COMPETITION OF ARTS AND POEMS FOR PEOPLE IN A SITUATION COGNITIVE DISABILITY

- INTERNATIONAL
COMPETITION
- EXCLUSIVELY FOR THE
DISABLED
- INTERGENERATIONAL (3 TO 98 YEARS)
- 2 ARTISTIC GENRES
- ANNUAL EVENT FOR INSTITUTIONS
WORKING WITH DISABILITIES



**WINNERS OF THE 3 CATEGORIES
IN ARTS AND POEMS
ARTS & POEMS CONTEST**



**AWARDS DAY
WITH MORE THAN 140 ATTENDEES**

ARTS & POEMS CONTEST 2023

ARTS & POEMS CONTEST 2023



**SPECIAL AWARD,
MARCELO, NANCY AND NATALIA TRAVELED
FROM BUENOS AIRES, ARGENTINA
ACCOMPANYING FRANCO VARELA
TO RECEIVE YOUR 1ST PLACE PRIZE
IN THE OVER 18 AGE CATEGORYS**

ARTS & POEMS CONTEST 2023



**GUIDED TOURS,
ALL INSTITUTIONS ATTENDED WITH
THEIR DELEGATIONS
EXCLUSIVELY TO SEE THE SAMPLE OF THE
2ND CONTEST. IN THE PHOTO: PEDRO
MATTOS
WINNER OF ITS CATEGORY TOGETHER WITH
A
DELEGATION FROM HIS PAUL HARRIS
SCHOOL**

IMPACTO

2º CONCURSO INTERNACIONAL

2023



120

Participantes



288

Beneficiarios indirectos
(familias)



3

Países



17

Instituciones



112

Obras pictóricas



14

Poemas



PROYECTOS EN BUSCA DE FINANCIAMIENTO

1. MURALES ARTÍSTICOS, QUE PROMUEVAN VALORES POSITIVOS UNIVERSALES.
2. CONTAINER MINI MUSEOS, EXHIBICIÓN ITINERANTE DE ARTE.
3. ESPACIOS QUE SANAN, CREACIÓN DE JARDINES MULTISENSORIALES.



FUNDACIÓN
REGALA
CONSENTIDO

— www.regalaconsentido.org —

Esta fundación nace de fundación ArtLabbé y fue creada con el objetivo de promover la inclusión laboral y el altruismo o responsabilidad social empresarial.

En los talleres de arte antes descritos, los participantes o beneficiarios con y sin discapacidades cognitivas, pueden crear productos de uso cotidiano, con la consiguiente posibilidad de venderlos en la **tienda de Regala CONSENTIDO**



FUNDACIÓN
REGALA
CONSENTIDO

INSERTAMOS A ESTOS ARTISTAS
EN LA ECONOMÍA LOCAL
CON LA POSIBILIDAD
DE SER UN APOORTE A LA ECONOMÍA FAMILIAR,
DIGNIFICANDO SU CONDICIÓN DE SER HUMANO
SIN IMPORTAR
SU SITUACIÓN COGNITIVA
O INTELECTUAL.

FUNDACIÓN
REGALA
CONSENTIDO



TOMÁS BROWNE 25 AÑOS
SÍNDROME DE DOWN
ARTISTA

INTERVIENE ZAPATILLAS DE LONA CON DISEÑOS CREATIVOS
EN LA FOTO JUNTO A SU MADRE PIERRET SANTANDER

FUNDACIÓN
REGALA
CONSENTIDO



PABLO VÁSQUEZ 30 AÑOS
SÍNDROME DE DOWN
ARTISTA
DISEÑÓ EL "PAJARO CARPINTERO", EL QUE SE ESTAMPÓ EN
POLERONES, POLERAS, MUGS, DELANTALES, IMANES, ETC.
EN LA FOTO JUNTO A SU PADRE LUCIANO VÁSQUEZ

You by

FUNDACIÓN
REGALA
CONSENTIDO



**MARÍA SOLEDAD FARFÁN MORENO 22 AÑOS
SÍNDROME DE DOWN
ARTISTA
DISEÑÓ "MARIPOSA", EL QUE SE ESTAMPÓ EN
POLERONES, POLERAS, MUGS, DELANTALES, IMANES, ETC.
EN LA FOTO JUNTO A SU MADRE Y SU ABUELA**

FUNDACIÓN
REGALA
CONSENTIDO

VIVE LA EXPERIENCIA DE
**CELEBRACIONES
CONSENTIDO**

CELEBRA CON NOSOTROS CUMPLEAÑOS, ANIVERSARIOS
O FIESTAS EN GENERAL, CON EL OBJETIVO DE RECAUDAR FONDOS
PARA APOYAR PROYECTOS
DE INSTITUCIONES BENÉFICAS A TU ELECCIÓN.

DESDE 2005 ENTREGANDO UN ESPACIO PARA EL ARTE



FUNDACIÓN
REGALA
CONSENTIDO

CELEBRACIÓN DE CUMPLEAÑOS
EN EL QUE SE REALIZÓ UN TALLER DE ACUARELA
DICTADO POR LA DESTACADA ARTISTA CHILENA
EVA HOLZ

LOS INVITADOS CONVIRTIERON SU REGALO EN UNA DONACIÓN
PARA LA ORGANIZACIÓN BENÉFICA ESCOGIDA POR EL CELEBRADO

DESDE 2005 ENTREGANDO UN ESPACIO PARA EL ARTE

VISÍTANOS

www.@artlabbe.cl

www.@fundacionartlabbe.com

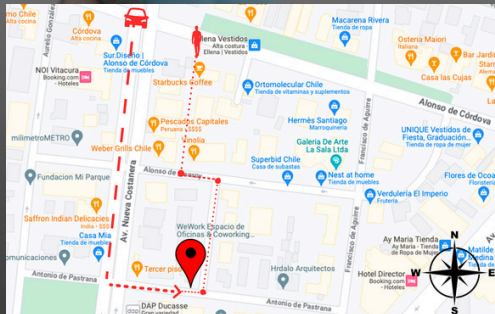
www.@regalaconsentido.org



@artlabbe

@fundacionartlabbe

@regalaconsentido



Avenida Nueva Costanera 3605 local 102 A, Vitacura.
(entrada por Antonio de Pastrana)

CONTACTO

info@artlabbe.cl | info@fundacionartlabbe.com | info@regalaconsentido.org

wsp +569 6215 8029

Labbé
ART
Gallery



FUNDACIÓN
REGALA
CONSENTIDO

